



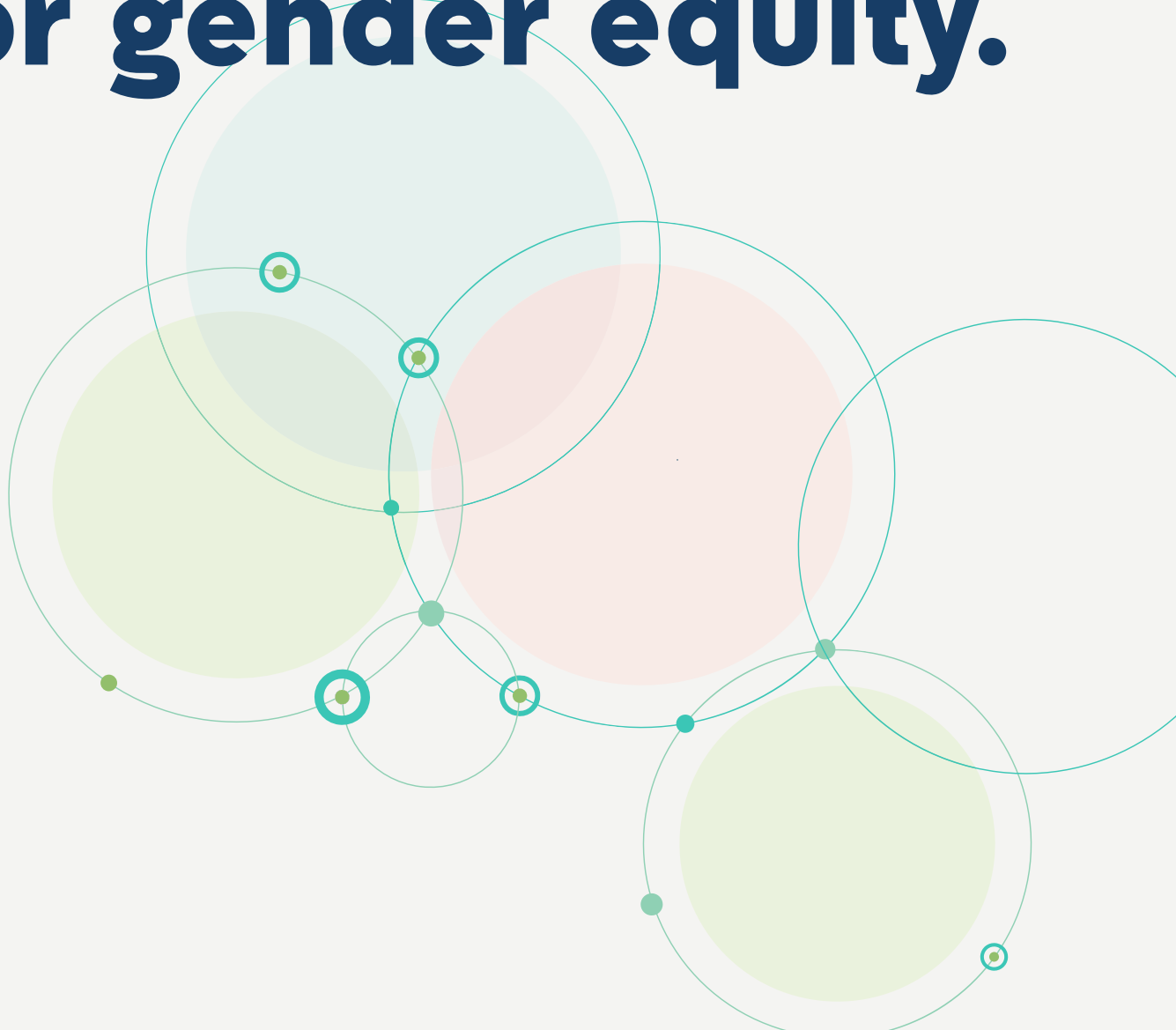
שתיל שטיל
Shatil



NCJW®
National Council of Jewish Women

Connecting
for Impact.
מתחברות
להשפעה
نتواصل مع
محاور التأثير
הפנימיים בישראל
האקדמיים
החשובים ביותר

The collaborative planning process for gender equity.



This process is made possible through the generous support of the Dan David Foundation.

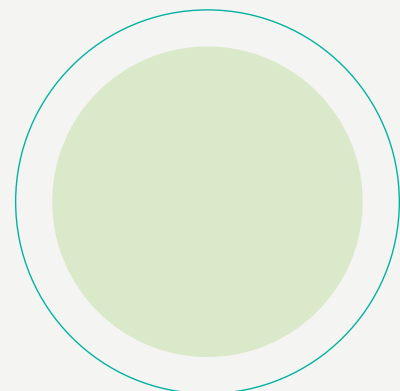
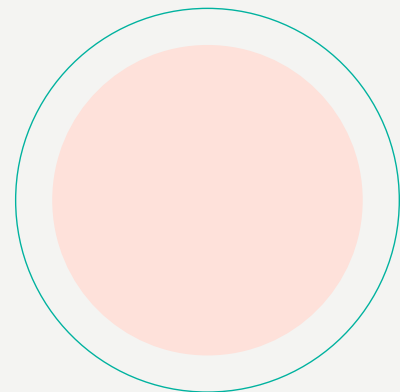
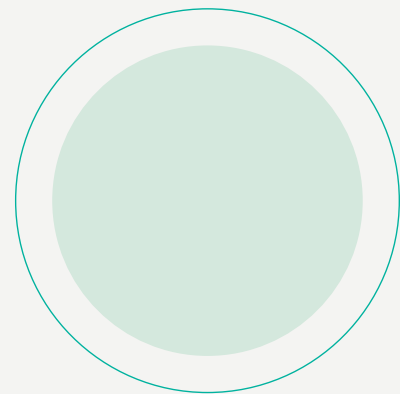
The October 7 war and the democratic crisis that preceded it have clarified beyond all doubt that systemic gender inequity in Israel and the almost complete absence of women at decision-making tables are a national failure that hinders Israeli society on all levels: security, social resilience, economy, and more. Addressing this failure requires innovative thinking, vision, planning, and commitment to work collaboratively to advance processes at scale.

Connecting for Impact, the initiative founded in 2018 by National Council of Jewish Women (NCJW) and the NCJW Women and Gender Studies program at Tel Aviv University to strengthen the Israeli feminist ecosystem, has teamed up with partners *Shatil* and *BeDo* to launch **The Collaborative Planning Process for Gender Equity**. Through an open call for applicants, we invited changemakers from the feminist field and other diverse spheres of influence to join a working group which would embark upon a planning process with an innovative approach.

Together, the group aims to develop:

1. A **common understanding** of needs and priorities as a basis for expanding collaborations
2. **Shared objectives** and pathways to achieving them within different spheres of influence
3. **Proposed infrastructural mechanisms** for coordination and progress monitoring
4. **Funding proposals** for coordinated plans at scale

Our call for applicants attracted over 70 applications including leaders of major women's organizations as well as key figures from business, media, local and national government institutions and more. Through a transparent selection process, we created a final group of 29 leaders who are at the heart of the process, while others are being invited to intersect with it at key points.



An Innovative and Collaborative Process.

The methodological basis for this process is [Theory U](#), an innovative systems change approach that was developed at MIT University.

The Theory U model is based on listening, collaboration, and prototyping in order to let go of established patterns and create conditions for change. Our process includes extensive consultation within and beyond the working group to generate directions for macro change processes with broad impact.

Process Overview

The process is centered around 5 “huddle” workshops for the group as a whole between April and July 2024 and parallel processes in small working groups to develop plans and prototype collaboration. At the end of the process, representatives of each group will receive ongoing consulting support as they finalize their group's proposals.

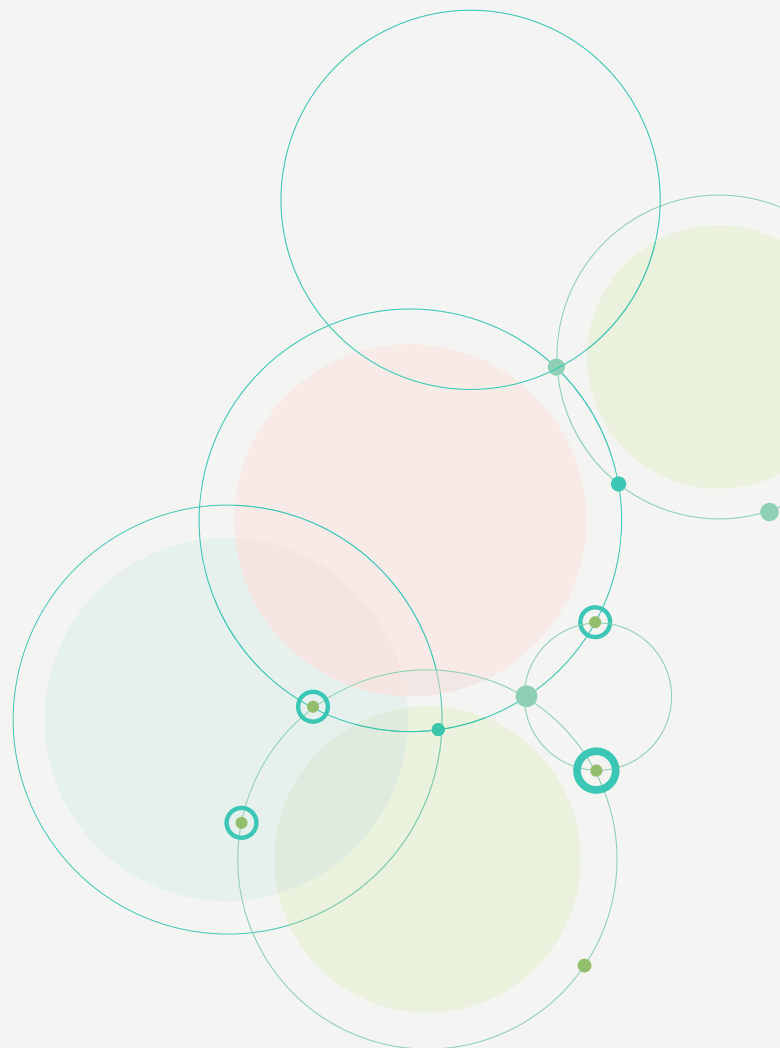
Considering this question from many angles, the group will follow the “U” model to develop answers which draw on individual and collective knowledge, external perspectives and sources of inspiration and insight. The process incorporates innovative methodologies including live graphic harvesting and 3D systems mapping in order to tap into creativity and intuition alongside conventional logical approaches.

The process outcomes and insights will be shared with stakeholders and supporters in September 2024.

Central Question

At the heart of our process lies the central question which will galvanize our planning:

Which collaborative pathways and infrastructure are crucial in order to actualize gender equity in key spheres of influence in Israel?



About the Partners

ORGANIZATIONAL PARTNERS:

National Council of Jewish Women (NCJW) is the oldest Jewish feminist civil rights organization working for equity and justice for women, children, and families in the United States and Israel.

BeDo works to advance leadership based on listening, to generate new ways of dealing with challenges in Israeli society.

Shatil leads social change in Israel to advance a democratic, equitable, and just society.

STEERING COMMITTEE:

The process is being driven by representatives of the partner organizations and the Connecting for Impact alumni network:



Kalela Lancaster

Representative in Israel, National Council of Jewish Women



Eynat Meytahl

Program Associate, National Council of Jewish Women



Dr. Yael Bar-Lev

Co-Founding Partner, BeDo



Liat Boltzman

Community Organizer in the Feminist Field, Shatil



Sharon Dwek

Director of Membership & Director of the Gender Giving Forum, JFN Israel



Anat Thon Ashkenazi

Director Democratic Values & Institutions, Israel Democracy Institute



Ghadir Hani

Feminist Activist for Shared Society



Adi Wimmer

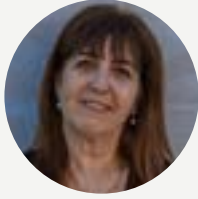
CEO El HaLev



Ronit Shoval

CEO Eden Association

PARTNERS IN THE PROCESS:



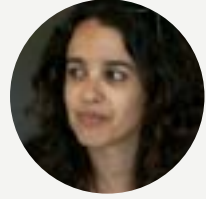
Gali Etzion, Naamat

Head of Legislative Consulting
and Special Affairs, Naamat



Tamar Shwartz

CEO, Women's Spirit



Lior Elefant

Independent filmmaker



Tal Hochman

CEO
Israel Women's Network



Orit Sulitzeanu

CEO Association of Rape
Crisis Centers in Israel



Ronie Nof Maltz

Director of the Knowledge
and Action Center, Women
and their Bodies



Noam Barkan

Correspondent,
Channel 13 News



Sapir Sluzker Amran

Co-Founder & CEO,
Breaking the Walls



Noa Borstein

Editor-in-Chief,
Politically Correct



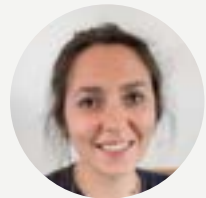
Manal Shalabi

CEO, Ad'ar Association



Keren Horowitz

CEO, The Rackman Center
for the Advancement of the
Status of Women

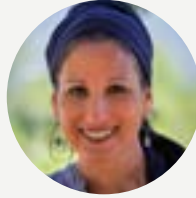


Vicki Izdinski

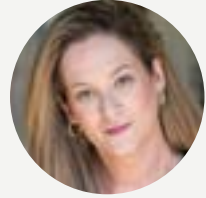
Founder & Director,
Our Israel



Hadas Reis
Education Expert,
Mandel Foundation



Shoshanna Keats Jaskoll
Co-Founder, Chochmat Nashim



Dr. Naama Goldberg
CEO, Lo Omdot



Ela Alon
CEO, Itach-Maaki Women
Lawyers for Social Justice



Dr. Ariel Vainer
Founder & Managing Partner,
Virtue



Or Abu
Director, The Task Force on
Human Trafficking



**Dr. Adva
Berkovitch-Romano**
Director of Education,
Bonot Alternativa



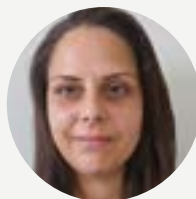
Yael Yechieli
Founder, 5050 Initiative



Ola Najami Yousef
Director of the Jewish-Arab
Center for Peace,
Givat Haviva



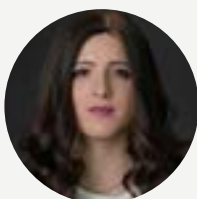
**Racheli
Tadessa-Malkai**
Founder and Director, Empowering
Ethiopian Women Association



**Moshira Abu Rashed
Attamneh**
Head of Young Adults
Programs, Rashi Foundation



**Sharon
Brick-Deshen**
CEO, Kolech



Tzippy Lavi
Haredi Feminist Activist